

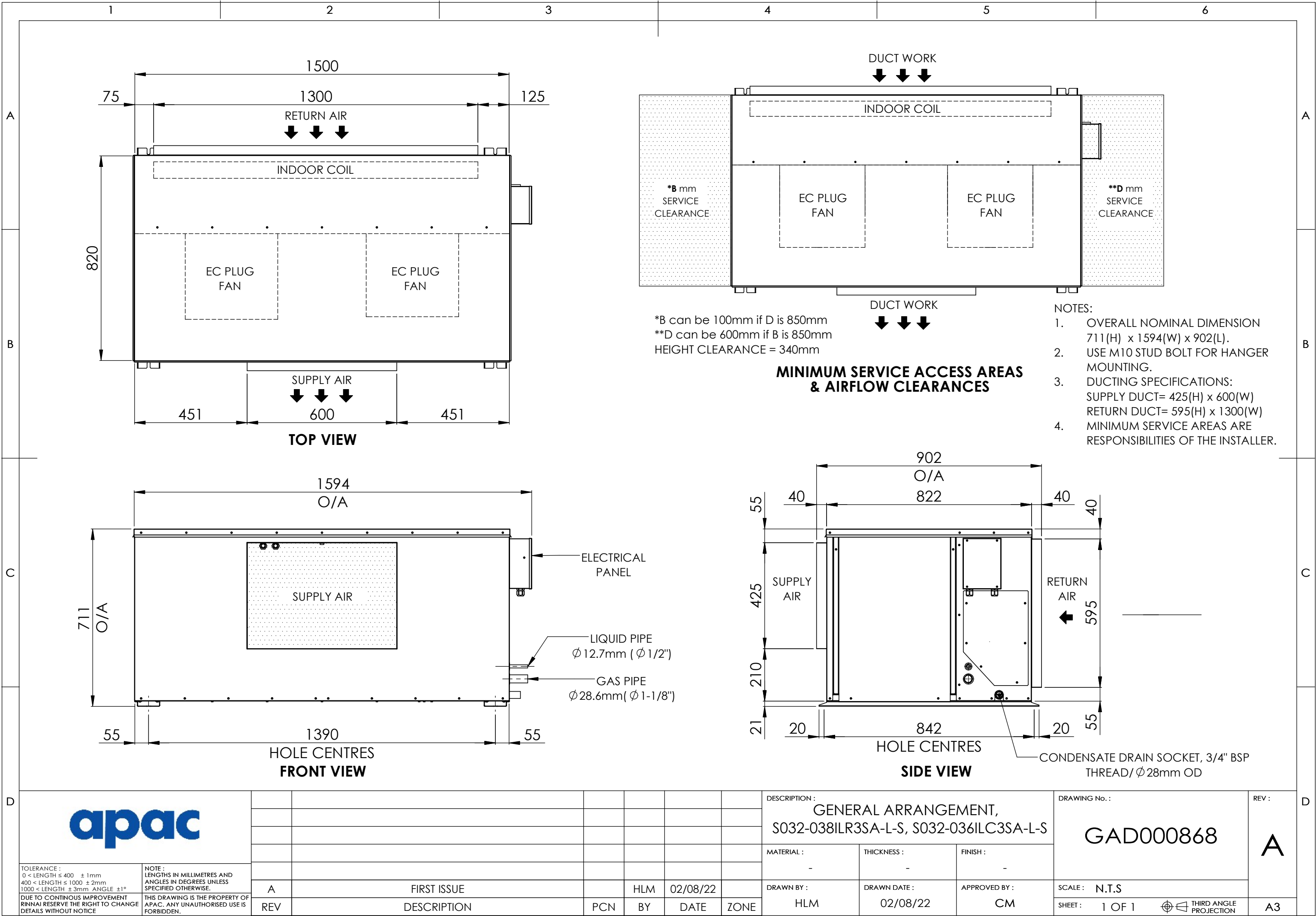


D									DESCRIPTION : GENERAL ARRANGEMENT, S032-038OVR3SA-L-S, S032-036OVC3SA-L-S			DRAWING No. : GAD000825		REV : A	D	
	TOLERANCE : 0 < LENGTH ≤ 400 ± 1mm 400 < LENGTH ≤ 1000 ± 2mm 1000 < LENGTH ± 3mm ANGLE ±1°		NOTE : LENGTHS IN MILLIMETRES AND ANGLES IN DEGREES UNLESS SPECIFIED OTHERWISE.													
	A	FIRST ISSUE					HLM	19/07/22		DRAWN BY : RZL	DRAWN DATE : 19/07/22	APPROVED BY : CM	SCALE : N.T.S			
	REV	DESCRIPTION				PCN	BY	DATE	ZONE				SHEET : 1 OF 1	 THIRD ANGLE PROJECTION		A3



TECHNICAL DATA SHEET

MODEL NUMBER		Indoor	S027ILC3SA-F-S	S032ILC3SA-F-S	S038ILC3SA-F-S	S043ILC3SA-F-S	S048ILC3SA-F-S	
		Outdoor	S027OVC3SA-L-S	S032OVC3SA-L-S	S038OVC3SA-L-S	S043OVC3SA-L-S	S048OVC3SA-L-S	
OUTDOOR SECTION	CAPACITY							
	Cooling	kW TOTAL*	28.65	33.25	39.42	45.97	47.18	
		kW SENSIBLE*	21.60	25.88	29.76	33.69	35.97	
		EER (kW / ikW)*	3.34	3.22	3.23	3.23	3.04	
	CAPACITY STEPS (%)		0/100	0/100	0/50/100	0/50/100	0/50/100	
	COMPRESSOR							
	TYPE		SCROLL	SCROLL	SCROLL	SCROLL	SCROLL	
	STARTER TYPE		D.O.L (Opt Soft/Start)	D.O.L (Opt Soft/Start)	D.O.L (Opt Soft/Start)	D.O.L (Opt Soft/Start)	D.O.L (Opt Soft/Start)	
	PHASE		3Ø	3Ø	3Ø	3Ø	3Ø	
	No. OFF		1	1	1	1	1	
	PROTECTION DEVICES		HP SWITCH, LP SWITCH, INTERNAL THERMAL CUTOUT					
	ALL COMPRESSORS HAVE		SUMP HEATER					
	FAN							
	TYPE		AXIAL	AXIAL	AXIAL	AXIAL	AXIAL	
	ikW (MAX INPUT)		0.39	0.39	0.39	0.39	0.39	
	PHASE		1Ø	1Ø	1Ø	1Ø	1Ø	
	No. OFF		2	2	2	2	2	
	FAN SPEED CONTROL		2 SPEED VIA	2 SPEED VIA	2 SPEED VIA	2 SPEED VIA	2 SPEED VIA	
	HEAT EXCHANGER							
	TYPE		ALU / CU COIL	ALU / CU COIL	ALU / CU COIL	ALU / CU COIL	ALU / CU COIL	
	NOM. AIRFLOW l/s		-	-	-	-	-	
	REFRIGERANT SYSTEM							
TYPE		R410A						
FACTORY CHARGE PER CIRCUIT (KG)		5.75	6.75	9.5	11	10.8		
No. OF CIRCUITS		1	1	1	1	1		
REFRIGERANT CONTROL		TXV						
DIMENSIONS								
H X W X D (mm)		1440 x 1897 x 900	1643 x 1897 x 900		1846 x 1897 x 900			
WEIGHT								
OPERATING KG		238	256	309	314	317		
SHIPPING KG		282	300	348	358	360		
ELECTRICAL								
POWER SUPPLY		415v / 3Ø / 50hz						
FLA / RLA (Amps)		26.5 / 17.4	25.2 / 20.2	33.6 / 22.1	35.2 / 24.9	37.6 / 28.3		
INDOOR SECTION	FAN							
	TYPE		EC PLUG	EC PLUG	EC PLUG	EC PLUG	EC PLUG	
	ikW (MAX INPUT)		1.32	1.32	1.32	3.35	3.35	
	PHASE		3Ø	3Ø	3Ø	3Ø	3Ø	
	No. OFF		1	1	1	1	1	
	FAN SPEED CONTROL		VARIABLE SPEED	VARIABLE SPEED	VARIABLE SPEED	VARIABLE SPEED	VARIABLE SPEED	
	HEAT EXCHANGER							
	TYPE		ALU / CU COIL	ALU / CU COIL	ALU / CU COIL	ALU / CU COIL	ALU / CU COIL	
	NOM. AIRFLOW l/s		1450	1775	1875	2200	2470	
	EXT STATIC pa		100					
	DIMENSIONS							
	H X W X D (mm)		711 x 1413 x 902	711 x 1594 x 902		711 x 2292 x 902		
	WEIGHT							
	OPERATING KG		117	125	133	160	160	
	SHIPPING KG		166	174	181	210	210	
	COMBINED SECTIONS	ELECTRICAL						
		POWER SUPPLY		415v / 3Ø / 50hz				
FLA / RLA (Amps)		2.1 / 1.0	2.1 / 1.4	2.1 / 1.5	5.2 / 1.9	5.2 / 2.4		
ELECTRICAL								
H.P. CUT OUT / IN kPa		4500 / 3450	4500 / 3450	4500 / 3450	4500 / 3450	4500 / 3450		
L.P. CUT OUT / IN kPa		175 / 345	175 / 345	175 / 345	175 / 345	175 / 345		
NOM. R.L.A. (TOTAL SYSTEM)		18.39	21.50	23.56	26.83	30.70		
MAX. F.L.A. (TOTAL SYSTEM)		28.62	27.26	35.66	38.76	41.16		
GENERAL								
CABINET		GALVANISED SHEET STEEL						
INSULATION		25MM ALUMINIUM FOIL FACED POLYETHYLENE ACOUSTIC INSULATION						
EXTERNAL FINISH		POLYESTER POWDER COAT (OUTDOOR SECTION) - COLOUR LIGHT GREY AS STANDARD - OPTIONS AVAILABLE NO COATING FOR INDOOR SECTION						
INDOOR AND OUTDOOR PIPE CONNECTION								
LIQUID mm (inch)		12.7 (1/2")	12.7 (1/2")	12.7 (1/2")	15.9 (5/8")	15.9 (5/8")		
GAS mm (inch)		28.6 (1-1/8")	28.6 (1-1/8")	28.6 (1-1/8")	28.6 (1-1/8")	28.6 (1-1/8")		
ADDITIONAL REFRIGERATION CHARGE AND FIELD PIPING CONNECTIONS								
REFER TO INSTALLATION AND OPERATION MANUAL								
NOISE LEVELS [Based on condenser fan's sound data]								
SOUND POWER db(A)		67.1	67.5	66.9	67.2	67.2		

Note: Rated in accordance with AHRI 210/240 or 340/360

Performance excludes iKW of indoor fan motor

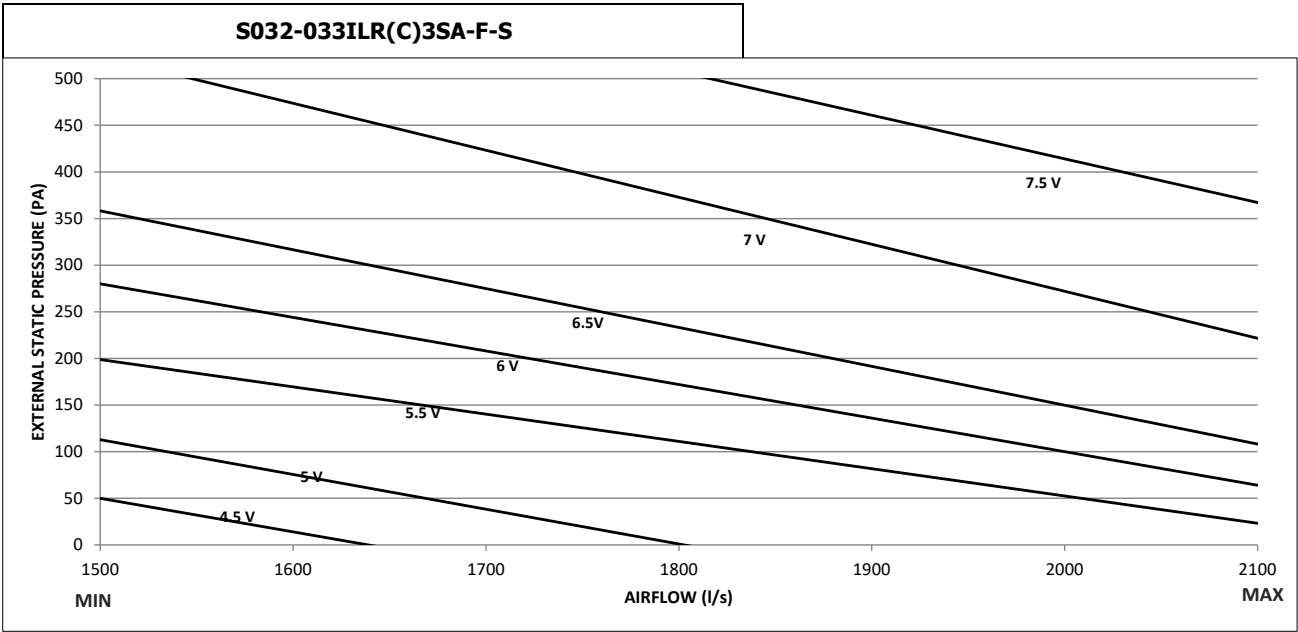
R.L.A - Run Load Amps are based on current drawn at nominal conditions

F.L.A - Full Load Amps are based on the overload settings [Max Current] of all Compressor and Fan Motor(s)

Date	Document #	Approved By	Revision
30/1/23	TDS001177	CM	A

NOTE: Due to continuous improvement Rinnai reserve the right to change details without notice.

FAN PERFORMANCE CURVE



- Note:
- 1. 4V, 4.5V, 5V, 5.5V, 6V, 6.5 V, 7V and 7.5 V represents potentiometer voltage. Potentiometer can be adjusted to achieve desired flowrates.
 - 2. Potentiometer voltage can be varied infinitely between 0 to 10V.

Date	Document #	Approved By	Revision
17/5/23	FPD001298	CM	A

NOTE: Due to continuous improvement Rinnai reserve the right to change details without notice.



**HIGH EFFICIENCY
SPLIT OUTDOOR / INDOOR LOW PROFILE
R410A REFRIGERANT**

SOUND DATA TABLE

MODEL NUMBER	S032OVR(C)3SA-L-S / S032ILR(C)3SA-F-S
---------------------	--

Outdoor Fan

Sound Power Level dB(A)	Octave band Centre Frequency (hz), dB						
	125	250	500	1k	2k	4k	8k
67.5	73.8	62.9	63.1	63	60.3	54	50.5

Indoor Fan

Sound Power Level dB(A)	Air Flow (l/s)	Octave band Centre Frequency (hz), dB						
		125	250	500	1k	2k	4k	8k
81.4	1775	67.7	71.7	74.8	77.6	74.7	72.2	66.9

Date	Document #	Approved By	Revision
16/5/23	SDT001293	CM	A

NOTE: Due to continuous improvement Rinnai reserve the right to change details without notice.