

apac

APAC

**Commercial & Industrial
HVAC**



apac





About Us

APAC is an important part of the Rinnai Corporation, a listed company headquartered in Nagoya, Japan. Rinnai being one of the global leading suppliers in hot water, heating and cooling, has an international presence with close to 50 subsidiaries and affiliates around the world. Customers can therefore be rest assured knowing that APAC will deliver when the heat it on!

Our vision is to be market leaders in the provision of innovative products and services within our target business arenas – to meet a growing demand for value-based products, environmental sustainability and renewable energy efficiency.

Our mission is to strive towards our vision and achievement of strategic goals through a focus on our customers' needs, strategic business diversification, product development and differentiation. We do this with integrity, care for our employees and community, environmental responsibility and by aligning our business processes to deliver what we promise – brand leadership, customer first and profitable growth.

apac

APAC Advantage

Being the supplier of choice for commercial and industrial air conditioning throughout Australia for decades, and now with the backing of Rinnai Corporation, our strategic investment aims to position Malaysia as the regional technology hub within the Southeast Asia driving towards as the centre of excellence and innovation.

Designed and built with reduced environmental impact in mind as our No.1 priority, the latest units are not only ready for new developments, they're also the perfect replacement for aging HVAC units nearing the end of their operating life. APAC units can satisfy almost every light and heavy commercial application, plus an unmatched list of factory fitted options and accessories which can be applied to cover a wide range of needs including industrial, marine and off-shore.





Reduced Energy Costs

Our APAC range pushes the boundary in high efficiency ratings so you can enjoy up to 31% energy savings, lowering your power bills significantly



Flexible

Unmatched list of factory fitted options to make the product suitable for almost any commercial or industrial projects.



Reliability

High efficiency direct drive fans ensure low ongoing maintenance costs, and better reliability



Engineered & Built in Malaysia



Performance Tested in a NATA accredited Test Laboratory



Quality Assurance Built in a production facility with a certified quality management system to ISO9001

Investing in South East Asia

APAC production facility

Energy Efficiency & Sustainability

We understand that comfort, health and energy use requires a delicate balance in ensuring the well-being in our day-to-day living spaces. As an advocate for creating a healthier way of living, we are committed to delivering energy-efficient climate control by embracing sustainability, to further improve the quality of life with the peace of mind to our clients.

Our mission is to strive towards our vision and achievement of strategic goals through a focus on our customers' needs, strategic business diversification, product development and differentiation. We do this with integrity, care for our employees and community, environmental responsibility and by aligning our business processes to deliver what we promise – brand leadership, customer first and profitable growth.

World-class manufacturing

Rinnai Manufacturing Malaysia Sdn Bhd, produces some of the world's most efficient HVAC products – APAC, built locally in Malaysia. Our innovative and tailored approach focusing on relentless R&D, design, and manufacturing capability, further adds to Rinnai's existing superior technical and state-of-the-art manufacturing facilities globally.

Our manufacturing facility located in Selangor, Malaysia is an extension of our APAC facility in Australia, bringing altogether the same world-class innovative products to the region, supported by a large international sales, distribution and service network.



Product line-up



**Under - over (horizontal)
packaged unit**

012-023kW Capacity range



**Side - by - side (horizontal)
packaged unit**

012-095kW Capacity range



Split ducted unit (low profile)

012-046kW Capacity range



Split ducted unit (horizontal)

054-092kW Capacity range



Low Operating Costs

Our APAC range pushes the boundary in high efficiency ratings so you can enjoy better energy savings, hence lowering your power bills significantly



Low Cost of Ownership

High efficiency direct drive fans ensure low ongoing maintenance costs.



Longer Lasting

Engineered and built to operate in world's toughest conditions.

APAC Technology



Scroll compressors

Scroll type compressors for increased efficiency and reliability.



EC plug fans

Speed controlled high static direct drive impeller with Electronically Commutated (EC) variable speed motor for lower energy use.



Outdoor coil guard

Provides protection from the elements and impact damage



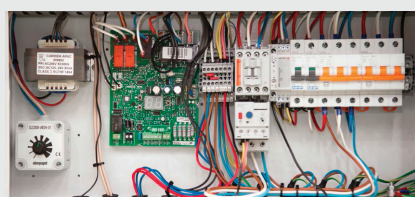
Hybrid axial fan

Speed controlled direct drive external rotor motor with hybrid blades for improved efficiency and performance.



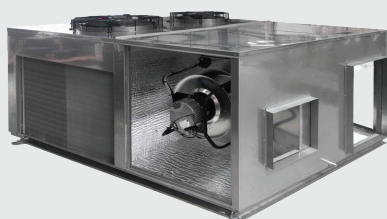
Coil corrosion protection

Epoxy coated outdoor coils for improved corrosion resistance.



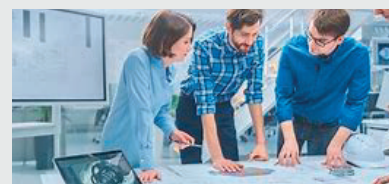
Open controls

Compatible with all BMS control systems and simple 24-volt control circuit for easy fault diagnostics.



Customised Designs

Many pre-engineered factory fitted options to suit your application



Engineered Products

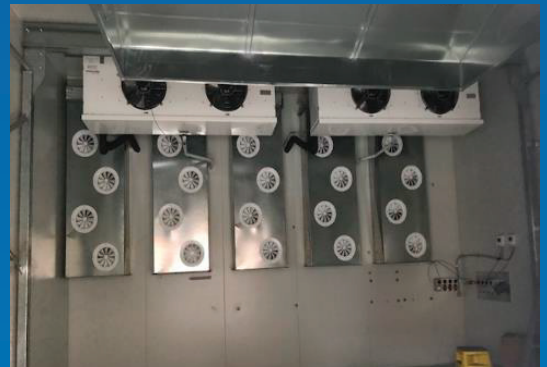
Our team can engineer products specifically for your application based on your project requirements

Trusted performance

Apac has one of the few NATA certified test laboratory's in the region to ensure compliance with the relevant standards. You can rest assured with proven performance in the field.

Yukawa NATA Certified Laboratory

- NATA certified 2022; capacity is up to 200kW and the temperature tolerance is $\pm 0.5^{\circ}\text{C}$
- One of the few NATA approved test facilities in the region.



Under-over horizontal packaged unit

Features

- Galvanised type steel cabinet painted inside & out
- Scroll type compressor
- EC blower type indoor fan with speed control
- External rotor motor type outdoor fan(s)
- TXV refrigerant control
- Removable outdoor coil guards
- 1000hrs Epoxy coated outdoor coils
- Robust controls
- PE type closed cell insulation
- Safety protection circuit

Factory options – Customised to order (CTO)

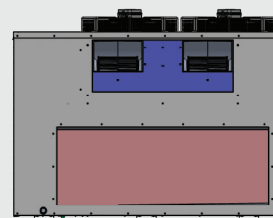
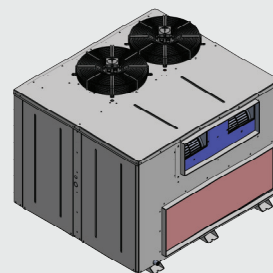
- Compressor soft start
- High static outdoor fans
- Phase fail relay
- Fire relay
- Double layered insulation to indoor section (50mm)
- Capacity modulation control
- Outdoor coil(s) with anti-corrosion post treatment
- Indoor coil(s) with anti-corrosion post treatment
- Discharge & suction isolation valves
- Liquid isolation valves
- Compressor sound jackets
- IP55 Rating
- Modbus high level interface

Factory options – Engineered to order (ETO)

- 316L stainless steel cabinet, unpainted
- 316L stainless steel external fasteners
- Outdoor coil(s) copper / copper
- Indoor coil(s) copper / copper

Handing options

Centre Under Return
Centre Over Supply



Under-over horizontal packaged unit (Cool only) 012-023kW

Model Number (Cooling Only)	Packaged Unit	P012AHC3SA-C-S	P015AHC3SA-C-S	P018AHC3SA-C-S	P020AHC3SA-C-S	P023AHC3SA-C-S
Rated Cooling	Total Capacity (kW) ³	12.57	15.54	17.43	20.53	22.89
	Sensible ³	9.70	12.13	13.45	15.88	18.17
	EER (kW/ikW) ³	3.50	3.70	3.49	3.60	3.32
AHRI Compliant	AHRI 210/240	Yes				
Operating Range	Maximum °C	+52				
	Minimum °C	+10				
Capacity Steps	%	0/100				
Compressor	Type	Scroll				
	Starter	D.O.L (Optional Soft Starter)				
	Qty	1				
Outdoor Fan	Type	Axial				
	Speed Control	2 Speed via Capacitor				
	Qty	2				
Refrigerant System	Type	R410A				
	Charge Per Circuit kg	3.95	5.30	5.70	7.30	6.80
	No of Circuits	1				
Indoor Fan	Type	Twin EC Blower				
	Speed Control	Variable Speed				
	Qty	1				
Airflow Indoor (L/s)	Nominal	625	835	875	990	1120
	Maximum	781	1044	1094	1238	1400
	Minimum	469	626	656	743	840
Available External Static Pressure	Pa	+200 Pa				
IP Rating		IP44 (Optional IP55)				
Power Supply	(Volt/Phase/Hz)	400-415V / 3Ph + N / 50Hz				
Rated Load Amps ⁴ .	Total	8.60	11.30	13.10	13.60	15.10
Full Load Amps ⁵ .	Total	14.1	16.4	17.9	23.3	
Total Dimensions (mm)	Height	1091			1191	
	Width	1352			1527	
	Length	1276			1426	
Nominal Weight ² .	Total kg	215	231	238	29.5	
Rated Sound Power	db(A)	61.7			66.6	

1. For reverse cycle model only
2. For base model only. Factory options will vary
3. Performance excludes ikW of evaporator fan motor
4. R.L.A - Run Load Amps are based on current drawn at nominal conditions
5. F.L.A - Full Load Amps are based on the overload settings [max current] of all compressor and fan motor(s)

Side-by-side horizontal packaged unit

Features

- Galvanised type steel cabinet painted inside & out
- Scroll type compressor
- EC plug type indoor fan with high static capability
- External rotor motor type outdoor fan(s)
- TXV refrigerant control
- Removable outdoor coil guards
- 1000hrs Epoxy coated outdoor coils
- Robust controls
- PE type closed cell insulation
- Safety protection circuit

Factory options – Customised to order (CTO)

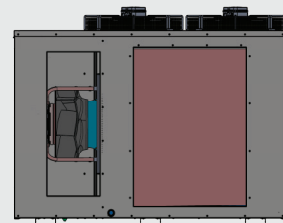
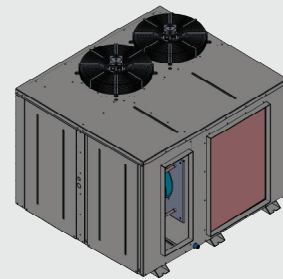
- Compressor soft start
- High static outdoor fans
- Phase fail relay
- Fire relay
- Double layered insulation to indoor section (50mm)
- Capacity modulation control
- Outdoor coil(s) with anti-corrosion post treatment
- Indoor coil(s) with anti-corrosion post treatment
- Discharge & suction isolation valves
- Liquid isolation valves
- Compressor sound jackets
- IP55 Rating
- Modbus high level interface

Factory options – Engineered to order (ETO)

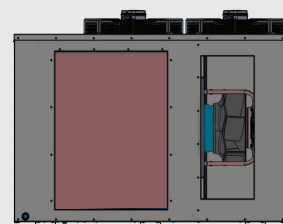
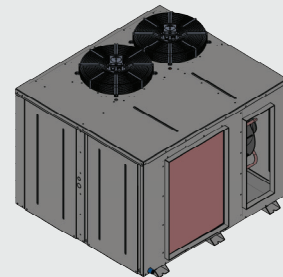
- 316L stainless steel cabinet, unpainted
- 316L stainless steel external fasteners
- Outdoor coil(s) copper / copper
- Indoor coil(s) copper / copper

Handing options

Left hand supply air (standard)



Right hand supply air (optional)



Side-by-side horizontal packaged unit (Cool only) 012-092kW

Model Number (Cooling Only)	Packaged Unit	P012AHC 3SA -L/R-S	P015AHC 3SA -L/R-S	P018AHC 3SA -L/R-S	P020AHC 3SA -L/R-S	P023AHC 3SA -L/R-S	P027AHC 3SA -L/R-S	P032AHC 3SA -L/R-S	P036AHC 3SA -L/R-S	P042AHC 3SA -L/R-S	P046AHC 3SA -L/R-S	P054AHC 3SA -L/R-S	P064AHC 3SA -L/R-S	P072AHC 3SA -L/R-S	P084AHC 3SA -L/R-S	P092AHC 3SA -L/R-S
Rated Cooling	Total Capacity (kW) ³	12.57	15.54	17.43	20.53	22.89	28.65	33.25	38.27	41.70	46.93	58.48	64.33	75.22	85.69	96.39
	Sensible ³	9.70	12.09	13.58	15.99	18.20	21.60	25.88	29.35	32.16	36.01	43.00	50.34	57.19	54.99	72.67
	EER (kW/ikW) ³	3.59	3.70	3.49	3.60	3.32	3.34	3.22	3.50	3.30	3.07	3.20	3.13	3.42	3.38	3.14
AHRI Compliant	AHRI 210/240	Yes														
Operating Range	Maximum °C	+52														
	Minimum °C	-10														
Capacity Steps	%	0/100										0/50/100				
Compressor	Type	Scroll														
	Starter	D.O.L (Optional Soft Starter)														
	Qty	1										2				
Outdoor Fan	Type	Axial						AC Axial								
	Speed Control	2 Speed via Capacitor														
	Qty	2										4				
Refrigerant System	Type	R410A														
	Charge Per Circuit kg	3.95	5.30	5.70	7.30	6.80	5.75	6.75	9.5	11	10.8	5.75	6.75	9.5	11	10.8
	No of Circuits	1					1					2				
Indoor Fan	Type	EC Plug														
	Speed Control	Potentiometer														
	Qty	1										2				
Airflow Indoor (L/s)	Nominal	625	800	890	1040	1190	1450	1775	1875	2200	2470	2880	3550	3750	4400	4930
	Maximum	781	1000	1113	1300	1488	1813	2219	2344	2750	3088	3600	4438	4688	5500	6163
	Minimum	469	600	668	780	893	1088	1331	1406	1650	1853	2160	2683	2813	3300	3698
Available External Static Pressure	Pa	High Static Capability (See Fan Performance Curves)														
IP Rating		IP44 (Optional IP55)														
Power Supply	(Volt/Phase/Hz)	400-415V / 3Ph + N / 50Hz														
Rated Load Amps ⁴	Total	6.8	8.1	9.8	10.4	11.4	18.4	21.5	21.3	24.1	30.7	36.5	41.8	42.8	47.1	59.8
Full Load Amps ⁵	Total	12.3	14.6	16.1	20.0	20.0	28.6	27.3	30.7	39.8	42.8	54.3	55.3	61.3	79.5	85.5
Dimensions (mm)	Height	1091			1261		1440	1643			1846		1400	1603		1806
	Width	1352			1527		1797					2300				
	Length	1276			1426		1682					2300				
Nominal Weight ² .	kg	228.0	244.0	251.0	307.0		392	423	488	534	534	713	815	859	994	994
Rated Sound Power	db(A)	61.7			66.6		67.1	67.5	66.9	67.2	67.2	66.8	70.3	69.5	70.0	70.0

1. For reverse cycle model only
2. For base model only. Factory options will vary
3. Performance excludes ikW of evaporator fan motor
4. R.L.A - Run Load Amps are based on current drawn at nominal conditions
5. F.L.A - Full Load Amps are based on the overload settings [max current] of all compressor and fan motor(s)

Split ducted unit (Low profile)

Features

- Galvanised type steel cabinet painted inside & out
- Scroll type compressor
- EC blower type indoor fan with speed control (012-023kW)
- EC plug type indoor fan with high static capability (027-046kW)
- External rotor motor type outdoor fan(s)
- TXV refrigerant control
- Removable outdoor coil guards
- 1000hrs Epoxy coated outdoor coils
- Robust controls
- PE type closed cell insulation
- Safety protection circuit

Factory options – Customised to order (CTO)

Outdoor

- Compressor soft start
- High static outdoor fans
- Phase fail relay
- Fire relay
- Capacity modulation control
- Outdoor coil(s) with anti-corrosion post treatment
- Discharge & suction isolation valves
- Liquid isolation valves
- Compressor sound jackets
- IP55 Rating
- Modbus high level interface

Indoor

- Double layered insulation to indoor section (50mm)
- Indoor coil(s) with anti-corrosion post treatment

Factory options – Engineered to order (ETO)

Outdoor

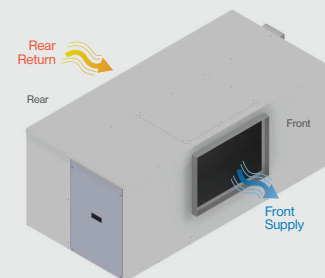
- 316L stainless steel cabinet, unpainted
- 316L stainless steel external fasteners
- Outdoor coil(s) copper / copper
- Indoor coil(s) copper / copper
- R22/R407C application

Indoor

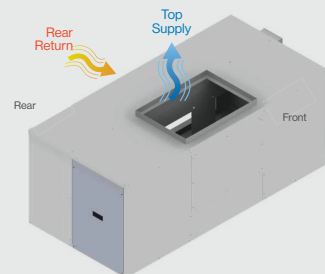
- 316L stainless steel cabinet, unpainted
- 316L stainless steel external fasteners
- Indoor coil(s) copper / copper
- R22/R407C application
- Supplied SKD (Semi-knockdown)

Handing options (Indoor)

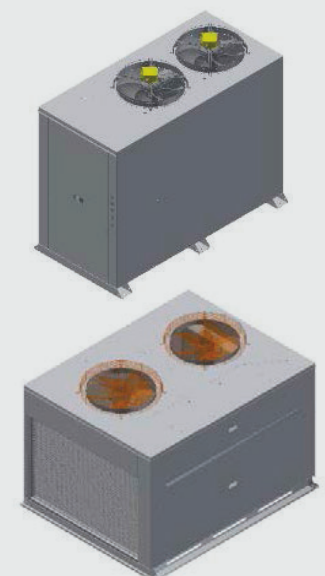
Front supply / Rear return



Top supply / Rear return



Handing (Outdoor)



Low profile split ducted unit (Cool only) 012-046kW

Model Number (Cooling Only)	Indoor Unit	S012ILC1SA-F-S	S015ILC1SA-F-S	S018ILC1SA-F-S	S020ILC1SA-F-S	S023ILC1SA-F-S	S027ILC3SA-F-S	S032ILC3SA-F-S	S036ILC3SA-F-S	S042ILC3SA-F-S	S046ILC3SA-F-S
	Outdoor Unit	S0120VC3SA-L-S	S0150VC3SA-L-S	S0180VC3SA-L-S	S0200VC3SA-L-S	S0230VC3SA-L-S	S0270VC3SA-L-S	S0320VC3SA-L-S	S0360VC3SA-L-S	S0420VC3SA-L-S	S0460VC3SA-L-S
Rated Cooling	Total Capacity (kW) ³	12.57	15.54	17.43	20.53	22.89	28.65	33.25	38.27	41.70	46.93
	Sensible ³	9.70	12.13	13.45	15.88	18.17	21.60	25.88	29.35	32.16	36.01
	EER (kW/ikW) ³	3.50	3.70	3.49	360	3.32	3.34	3.22	3.50	3.30	3.07
AHRI Compliant	AHRI 210/240	Yes									
Operating Range	Maximum °C	+50									
	Minimum °C	-10									
Capacity Steps	%	0/100									
Compressor	Type	Scroll									
	Starter	D.O.L (Optional Soft Starter)									
	Qty	1									
Outdoor Fan	Type	Axial									
	Speed Control	2 Speed Via Capacitor									
	Qty	2									
Refrigerant System	Type	R410A									
	Charge Per Circuit kg	3.95	5.30	5.70	7.30	6.80	5.75	6.75	9.50	11.00	10.80
	No of Circuits	1									
Indoor Fan	Type	Twin Deck Blower					EC Plug				
	Speed Control	Variable Speed					Potentiometer				
	Qty	1									
Airflow Indoor (L/s)	Nominal	625	835	875	990	1120	1450	1775	1875	2200	2470
	Maximum	781	1044	1094	1238	1400	1813	2219	2344	2750	3088
	Minimum	469	626	656	743	840	1088	1331	1406	1650	1853
Available External Static Pressure	Pa	+200 Pa					High Static Capability (See Performance Curves)				
IP Rating	Outdoor/Indoor	IP44 (Optional IP55) / 20									
Power Supply	(Volt/Phase/Hz)	400-415V / 3Ph + N / 50Hz									
Rated Load Amps ⁴	Outdoor/Indoor/Total	6.5/2.1/8.6	7.5/2.8/11.3	9.1/4.0/13.1	9.4/4.2/13.6	10.3/5.8/15.1	17.4/1.0/18.4	20.2/1.4/21.5	19.9/1.5/21.3	22.2/1.9/24.1	28.3/2.4/30.7
Full Load Amps ⁵	Outdoor/Indoor/Total	9.7/4.4/14.1	12/4.4/16.4	13.5/4.4/17.9	17.4/5.9/23.3		26.5/2.1/28.6	25.2/2.1/27.3	28.6/2.1/30.7	34.6/5.2/39.8	37.6/5.2/42.8
Outdoor Dimensions (mm)	Height	1091			1191		1440	1190		1190	
	Width	1352			1527		1897				
	Length	680			780		900				
Indoor Dimensions (mm)	Height	444			455		711				
	Width	1227			1502		1413	1594		2292	
	Length	691			741		902				
Indoor and Outdoor Pipe Connection Diameter	Liquid mm (inch)	9.5 (3/8") x 1			9.5 (3/8") x 1		12.7 (1/2") x 1			15.9 (5/8") x 1	
	Gas mm (inch)	19.1 (3/4") x 1			22.2 (7/8") x 1		28.6 (1-1/8") x 1			28.6 (1-1/8") x 1	
Nominal Weight ² .	Outdoor kg	147	159	166	191		238	256	282	314	316
Nominal Weight ² .	Indoor kg	44	48	48	65		117		13.3	160	160
Rated Sound Power	db(A)	61.7			66.6		67.1	67.5	66.9	67.2	67.2

1. For reverse cycle model only
2. For base model only. Factory options will vary
3. Performance excludes ikW of evaporator fan motor
4. R.L.A - Run Load Amps are based on current drawn at nominal conditions
5. F.L.A - Full Load Amps are based on the overload settings [max current] of all compressor and fan motor(s)

Split ducted unit (Horizontal)

Features

- Galvanised type steel cabinet painted inside & out
- Scroll type compressor
- EC plug type indoor fan with high static capability
- External rotor motor type outdoor fan(s)
- TXV refrigerant control
- Removable outdoor coil guards
- 1000hrs Epoxy coated outdoor coils
- Robust controls
- PE type closed cell insulation
- Safety protection circuit

Factory options – Customised to order (CTO)

Outdoor

- Compressor soft start
- High static outdoor fans
- Phase fail relay
- Fire relay
- Capacity modulation control
- Outdoor coil(s) with anti-corrosion post treatment
- Discharge & suction isolation valves
- Liquid isolation valves
- Compressor sound jackets
- IP55 Rating
- Modbus high level interface

Indoor

- Double layered insulation to indoor section (50mm)
- Indoor coil(s) with anti-corrosion post treatment

Factory options – Engineered to order (ETO)

Outdoor

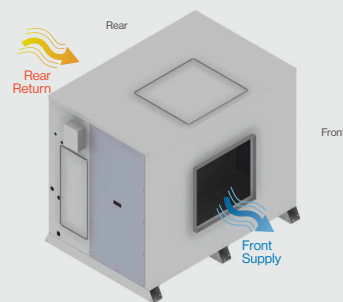
- 316L stainless steel cabinet, unpainted
- 316L stainless steel external fasteners
- Outdoor coil(s) copper / copper
- Indoor coil(s) copper / copper
- R22/R407C application

Indoor

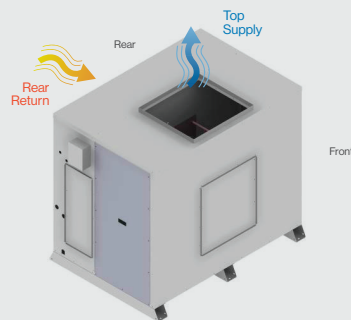
- 316L stainless steel cabinet, unpainted
- 316L stainless steel external fasteners
- Indoor coil(s) copper / copper
- R22/R407C application
- Supplied SKD (Semi-knockdown)

Handing options (Indoor)

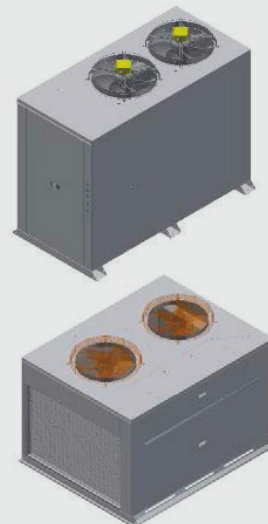
Front supply / Rear return (Standard)



Top supply / Rear return (Field configurable)



Handing (Outdoor)



Horizontal split ducted unit (Cool only) 054-092kW

Model Number (Cooling Only)	Indoor Unit	S054IHC3SA-F-S	S064IHC3SA-F-S	S072IHC3SA-F-S	S084IHC3SA-F-S	S092IHC3SA-F-S
	Indoor Unit	S054OVC3SA-L-S	S064OVC3SA-L-S	S072OVC3SA-L-S	S084OVC3SA-L-S	S092OVC3SA-L-S
Rated Cooling	Total Capacity (kW) ³	58.48	64.33	75.22	85.69	96.39
	Sensible ³	43.00	50.34	57.19	64.99	72.67
	EER (kW/ikW) ³	3.20	3.13	3.42	3.38	3.14
AHRI Compliant	AHRI 340/360	Yes				
Operating Range	Maximum °C	+52				
	Minimum °C	+10				
Capacity Steps	%	0/50/100				
Compressor	Type	Scroll				
	Starter	D.O.L (Optional Soft Starter)				
	Qty	2				
Outdoor Fan	Type	Axial				
	Speed Control	2 Speed via Capacitor				
	Qty	4				
Refrigerant System	Type	R410A				
	Charge Per Circuit kg	5.75	6.75	9.50	11.00	10.80
	No of Circuits	2				
Indoor Fan	Type	EC Plug				
	Speed Control	Potentiometer				
	Qty	1	2			
Airflow Indoor (L/s)	Nominal	2880	3550	3750	4400	4930
	Maximum	3600	4438	4688	5500	6163
	Minimum	2160	2663	2813	3300	3698
Available External Static Pressure	Pa	+200Pa				
IP Rating	Outdoor/Indoor	IP44 (Optional IP55) / 20				
Power Supply	(Volt/Phase/Hz)	400-415V / 3Ph + N / 50Hz				
Rated Load Amps ⁴ .	Outdoor/Indoor/Total	34.1 / 2.4 / 36.5	39.9 / 1.9 / 41.8	41.0 / 1.86 / 42.8	44.7 / 2.5 / 47.1	56.8 / 3.1 / 59.8
Full Load Amps ⁵ .	Outdoor/Indoor/ Total	49.1 / 5.2 / 54.3	51.1 / 4.2 / 55.3	57.1 / 4.2 / 61.3	69.1 / 10.4 / 79.5	75.1 / 10.4 / 85.5
Outdoor Dimensions (mm)	Height	1400	1603		1806	
	Width	2300				
	Length	1425				
Indoor Dimensions (mm)	Height	1400	1605		1805	
	Width	1600			1850	
	Length	1100				
Indoor and Outdoor Pipe Connection Diameter	Liquid mm (inch)	12.7 (1/2") x 1			15.9 (5/8") x 1	
	Gas mm (inch)	28.6 (1-1/8") x 1				
Nominal Weight ² .	Outdoor kg	527	612	647	738	740
	Indoor kg	290	340	340	461	461
Rated Sound Power	db(A)	66.8	70.3	69.5	70.0	70.0

1. For reverse cycle model only
2. For base model only. Factory options will vary
3. Performance excludes ikW of evaporator fan motor
4. R.L.A - Run Load Amps are based on current drawn at nominal conditions
5. F.L.A - Full Load Amps are based on the overload settings [max current] of all compressor and fan motor(s)

The perfect upgrade



apac

Our commercial and industrial range of products are a near perfect upgrade for your for existing units, offering unmatched list of factory fitted options to make APAC suitable for almost any projects.

Features

- Reduced energy Costs. High efficiency ratings with up to 31% energy savings, lowering your power bills significantly.
- Low Cost of Ownership. High efficiency direct fans ensure low maintenance costs.
- Robust and longer Lasting. Engineered and built to operate in world's toughest conditions.
- Low noise. Fans slow down during low ambient for less noise, up to 20% less sound.

Customised Solutions

Bespoke HVAC when you need it most

Depending on your needs we can customise or engineer-to-order several components and configurations to deliver the best results. Over the lifespan of a customised HVAC appliance, a system that strongly performs even in the harshest of environments offers long-term cost savings due to lower operation costs.

In most cases we can custom design to your brief, assemble and factory test prior to shipment.

Examples of customisation include:

Customised To Order (CTO)

- Compressor soft start
- High static outdoor fans
- Phase fail relay
- Fire relay
- Double layered insulation to indoor section (50mm)
- Capacity modulation control
- Outdoor coil(s) with anti-corrosion post treatment
- Indoor coil(s) with anti-corrosion post treatment
- Discharge & suction isolation valves
- Liquid isolation valves
- Compressor sound jackets
- IP55 Rating
- Modbus high level interface

Engineered To Order (ETO)

- 316L stainless steel cabinet, unpainted
- 316L stainless steel external fasteners
- Outdoor coil(s) copper / copper
- Indoor coil(s) copper / copper



Commercial

- Corrosion Protection
- Diverse Electrical Options
- High Static Fan Options



Industrial / Mining

- Corrosion Protection
- Special Electrical Specification
- Ingress Protection



Marine & Off - Store

- Stainless Steel Cabinets
- Copper / Copper Coils
- Special Electrical Specification



**Contact your
local authorised distributor:**

For further information visit
apacair.com.my
or call (+60) 3 7859 6679

Rinnai Manufacturing
Malaysia Sdn Bhd (1345828-P)
Selangor, Malaysia

apac